



**2019 CMOM PACKAGE 2 (URGENT)**

**Solicitation Number: CO-00333**

**Job No.: 19-4533**

**ADDENDUM 2**

**July 22, 2020**

To Bidder of Record:

This addendum, applicable to work referenced above, is an amendment to the bid proposal, plans and specifications and as such will be a part of and included in the Contract Documents. Acknowledge receipt of this addendum by entering the Addendum number and issue date on the space provided in submitted copies of the bid proposal.

<b>RESPONSES TO QUESTIONS</b>
-------------------------------

- 1. Question: Will pipe bursting be considered as an option for rehab on Broadway and S. Gevers if static is used to avoid utility disruption?**

*Response: Pipe bursting will not be considered. The sewer segments on sheet 10 and 11 contain voids, sags, and/or missing pipe that cannot be properly addressed by pipe bursting.*

- 2. Question: Is bid item No. 39 "Manhole Rehabilitation" to be used on the three existing manholes (bid item No. 22) that call for the ring and covers to be adjusted?**

*Response: Manhole Rehabilitation Rehab spec should not be used unless specifically called out. SAWS Specification 851 EXISTING MANHOLE ADJUSTMENTS should be used where manhole adjustments are called out.*

- 3. Question: When will contractors be given access to the link for electronic submissions?**

*Response: Access to the File Transfer Protocol (FTP) site for electronic bid submissions will be given on July 28, 2020 at 2:00 PM (CDT) via email to Janie.Powell@saws.org.*

- 4. On sheets 10, 11 and 12 of the spec it is calling out for these segments of pipe to be completely removed and disposed of. Why is the owner wanting replace these segments through Open cut means instead of pipe bursting?**

*Response: The sewer segments on sheet 10 and 11 contain voids, sags, and/or missing pipe that cannot be properly addressed by pipe bursting. The existing sewer segment on sheet 12 runs through a 7' x 7' single box culvert and requires an open cut reroute above the single box culvert to avoid any damage to the single box culvert.*

- 5. For the pipe bursting segments can the owner please provide the profile view of these segments?**

*Response: Profile view for pipe bursting segments will not be provided. Contractor to match existing inverts at manholes.*

**6. Will the contractor be allowed to work on more than one segment at the same time or will the contractor have to finish ones work area before moving on to the next?**

*Response: Contractor will be allowed to work on up to three (3) sites simultaneously.*

**CHANGES TO THE SPECIFICATIONS**

1. Remove the Bid Proposal in its entirety and replace with the attached revised version within this Addendum. This version should be used by Bidders when submitting a bid.
2. Special Conditions. The first paragraph of SC-3 Performance Time is deleted in its entirety and replaced with the following:

"Contractor shall submit at the pre-construction meeting a project schedule outlining the order in which the Project Locations will be completed. Contractor will be allowed to work on up to three (3) sites simultaneously. The project schedule shall be updated monthly to reflect the project's completed work and work pending completion."

3. Special Conditions. The following paragraph shall be included after the second paragraph of SC-10 Bypass Pumping and Traffic Control Plans:

"The Contractor's bypass pumping system design shall be developed based upon the requirements of specification ITEM NO. 864-S1 Bypass Pumping Small Diameter Sanitary Sewers and shall be submitted to SAWS for review and approval prior to commencement of construction. Suggested bypass plans are available to the Contractor in the plan drawings to accommodate the following bypass flows:

Bypass Pumping Site	Suction MH	Flow (GPM)
Broadway	MH 87993	550
S. Gevers	MH 427377	530
	MH 28635	1,880
Alicia	MH 47292	1,760
	MH 48006	700
Bretton Ridge	MH 48067	1,140
	MH 22098	650
Nogalitos	MH 22229	860
	MH 1037677	540
Shasta*	-	-

Flow data provided is based on full flow of the pipes bypassed in the suggested bypass plans. Information provided in the table above and suggested bypass plans is for information only.

\* Contractor to coordinate with property owners to minimize sewer laterals as needed. Sewer Facility usage during construction and/or intercept sewer laterals as needed."

**CHANGES TO THE PLANS**

1. Sheet 2: Remove and replace with the attached sheet within this Addendum. The following updates have been made to the Summary of Quantities:
  - a. Bid Item 900 Pipe Bursting 8" Sanitary Sewer Pipe 0'-10' depth (DR 13.5 160 PSI) has been **added**.
  - b. Bid Item 900 Pipe Bursting 10" Sanitary Sewer Pipe 0'-10' depth has been **removed**.
  - c. Bid Item 900 Pipe Bursting 10" Sanitary Sewer Pipe 0'-10' depth (DR 13.5 160 PSI) has been **added**.
  - d. Bid Item 0104 6017 Remove concrete (Driveways) (TXDOT Spec) has been **removed**.
  - e. Bid Item 0530 6004 Driveways (Concrete) (TXDOT Spec) has been **removed**.
  - f. Quantity for Bid Item 900 Pipe Bursting 8" Sanitary Sewer Pipe 0'-10' depth was **adjusted**.
  - g. Quantity for Bid Item 851 Adjusting Existing Manholes (with new ring and cover) was **adjusted**.
  - h. Quantity for Bid Item 413.1 Flowable Fill (CoSA Spec) was **adjusted**.

2. Sheet 3: Remove and replace with the attached sheet within this Addendum. COSA Drainage # has been updated to 210-206-8433.
3. Sheet 5: Remove and replace with the attached sheet within this Addendum. COSA storm water and floodplain related general notes have been **added**.
4. Sheet 10: Remove and replace with the attached sheet within this Addendum. The following updates have been made:
  - a. Existing AT&T Cable Linework and crossing callout have been **added**.
  - b. Callout **added**: PRIOR TO EXCAVATION/ REMOVAL OF EXISTING MANHOLES, AND INSTALLATION OF PROPOSED MANHOLES CONTRACTOR SHALL VERIFY EXACT LOCATION AND DEPTH OF EXISTING UTILITIES. CONTRACTOR SHALL PROTECT AND SUPPORT EXISTING UTILITIES DURING CONSTRUCTION (NSPI)
  - c. Callout **added**: EXISTING VOID AND UTILITY IN THIS AREA. CONTRACTOR SHALL PROTECT, MAINTAIN, SUPPORT EXISTING UTILITIES DURING CONSTRUCTION (NSPI). CONTRACTOR TO BACKFILL THE VOID WITH FLOWABLE FILL TO SUPPORT EXISTING UTILITIES IN THIS AREA.
  - d. Item 413.1 Flowable Fill (CoSA Spec) 4 CY **added**.
5. Sheet 13: Remove and replace with the attached sheet within this Addendum. The following updates have been made:
  - a. The following note was **added**: CONTRACTOR TO VERIFY THE CONDITION OF MANHOLE 991551 AND CONFIRM WITH INSPECTOR IF THE MANHOLE REQUIRES TO BE ADJUSTED PER SAWS STANDARD SPECIFICATION NO. 851.
  - b. 8" DR 13.5 160 PSI Sanitary Sewer Pipe to be installed.
    - i. Bid Item 900 Pipe Bursting 8" Sanitary Sewer Pipe 0'-10' depth (DR 13.5 160 PSI) has been **added**.
    - ii. Bid Item 900 Pipe Bursting 8" Sanitary Sewer Pipe 0'-10' depth has been **removed**.
6. Sheet 14: Remove and replace with the attached sheet within this Addendum. The following updates have been made:
  - a. Callouts and quantities for the removal and replacement of driveway have been **removed**. Driveway to remain in place.
  - b. The following notes were **added**:
    - i. CONTRACTOR TO AVOID SETTING PIPEBURSTING PITS WITHIN DRIVEWAYS AND STREET INTERSECTIONS.
    - ii. CONTRACTOR SHALL COMPLETE ALL WORK DURING NIGHT HOURS AS APPROVED BY TXDOT AND SAWS.
  - c. 10" DR 13.5 160 PSI Sanitary Sewer Pipe to be installed.
    - i. Bid Item 900 Pipe Bursting 10" Sanitary Sewer Pipe 0'-10' depth (DR 13.5 160 PSI) has been **added**.
    - ii. Bid Item 900 Pipe Bursting 10" Sanitary Sewer Pipe 0'-10' depth has been **removed**.
7. Sheet 15: Remove and replace with the attached sheet within this Addendum. The following updates have been made:
  - a. The following note was **added**:
    - i. CONTRACTOR TO AVOID SETTING PIPEBURSTING PITS WITHIN DRIVEWAYS AND STREET INTERSECTIONS.
    - ii. CONTRACTOR SHALL COMPLETE ALL WORK DURING NIGHT HOURS AS APPROVED BY TXDOT AND SAWS.
  - b. 8" DR 13.5 160 PSI Sanitary Sewer Pipe to be installed.
    - i. Bid Item 900 Pipe Bursting 10" Sanitary Sewer Pipe 0'-10' depth (DR 13.5 160 PSI) has been **added**.
    - ii. Bid Item 900 Pipe Bursting 10" Sanitary Sewer Pipe 0'-10' depth has been **removed**.
  - c. Bid Item 851 Adjusting Existing Manholes (with new ring & cover) has been **added** for MH 22098.

- 8. Sheet 16: Remove and replace with the attached sheet within this Addendum. ADJUST MH callout has been **removed**. Remove and replace ring and cover to be paid for under SS910 Manhole Rehabilitation.
- 9. Sheet 20: Remove and replace with the attached sheet within this Addendum. The following note was **added**: CONTRACTOR SHALL NOT PERFORM WORK DURING RAIN EVENTS. THE BYPASS SYSTEM SHALL NOT OBSTRUCT STORM RUNOFF FROM ENTERING THE SIDEWALK BRIDGE TO THE FLUME OR OBSTRUCT FLOW WITHIN THE DRAINAGE FLUME.
- 10. Sheet 21: Remove and replace with the attached sheet within this Addendum. The following note was **added**:
  - 1. CONTRACTOR SHALL NOT BURY BYPASS PIPING UNDER DRIVEWAYS ON NOGALITOS ST.

**CLARIFICATIONS**

- 1. Sheet 10: Contractor is to be aware of the existing void and AT&T utility found 73.8 LF upstream of MH 11459 on Broadway St. Contractor shall protect maintain, support existing utilities during construction and notify the engineer of any conflicts in this area (NSPI). Contractor is to backfill the void with flowable fill to support existing utilities in this area.




- 2. Bidders are advised that the Engineer’s OPCC has been adjusted to \$672,784.00.

**END OF ADDENDUM**

This Addendum, including these four (4) pages, is seventeen (17) pages in its entirety.

Attachments: Bid Proposal (3 pages total)  
 Replaced Plan Sheets (10 sheets total)

  
 Ernest Maestas, P.E.  
 Maestas & Associates, LLC  
 TBPE Registration No. F-333



BID PROPOSAL

PROPOSAL OF \_\_\_\_\_, a corporation  
a partnership consisting of \_\_\_\_\_  
an individual doing business as \_\_\_\_\_

THE SAN ANTONIO WATER SYSTEM:

Pursuant to Instructions and Invitation to Bidders, the undersigned proposes to furnish all labor and materials as specified and perform the work required for the project as specified, in accordance with the Plans and Specifications for the following prices in the bid proposal to wit:

**PLEASE SEE ATTACHED LIST OF BID ITEMS.**

\_\_\_\_\_  
BIDDER'S SIGNATURE & TITLE

\_\_\_\_\_  
FIRM'S NAME (TYPE OR PRINT)

\_\_\_\_\_  
FIRM'S ADDRESS

\_\_\_\_\_  
FIRM'S PHONE NO. /FAX NO.

\_\_\_\_\_  
FIRM'S EMAIL ADDRESS

The Contractor herein acknowledges receipt of the following:  
Addendum Nos. \_\_\_\_\_

OWNER RESERVES THE RIGHT TO ACCEPT THE OVERALL MOST RESPONSIBLE BID.

The bidder offers to construct the Project in accordance with the Contract Documents for the contract price, and to complete the Project within **180** calendar days after the start date, as set forth in the Authorization to Proceed. **The bidder understands and accepts the provisions of the contract Documents relating to liquidated damages of the project if not completed on time.**

Complete the additional requirements of the Bid Proposal which are included on the following pages.

2019 CMOM Package 2 (Urgent)

SAWS Job. No. 19-4533

Solicitation No. CO-00333

Item No.	Spec No.	Item Description	Units	Qty	Unit Price	Total Price
1	103.1	Remove Concrete Curb (COSA Spec)	LF	32	\$	\$
2	103.3	Remove Sidewalks and Driveways (COSA Spec)	SF	65	\$	\$
3	203.1	Tack Coat	GAL	40	\$	\$
4	205.2	Hot Mix Asphaltic Pavement, Type B (10" Compacted Depth)	SY	328	\$	\$
5	205.3	Hot Mix Asphaltic Pavement, Type C (3" Compacted Depth)	SY	1323	\$	\$
6	208.1	Salvaging, Hauling, and Stockpiling Reclaimable Asphaltic Pavement (3" Depth)	SY	1094	\$	\$
7	413.1	Flowable Fill (COSA Spec)	CY	16	\$	\$
8	500.1	Concrete Curb (COSA Spec)	LF	32	\$	\$
9	502.1	Concrete Sidewalks (COSA Spec)	SY	17	\$	\$
10	530.1	Barricades, Signs, and Traffic Handling (Broadway St)	EA	1	\$	\$
11	530.1	Barricades, Signs, and Traffic Handling (S Gevers)	EA	1	\$	\$
12	530.1	Barricades, Signs, and Traffic Handling (Alicia)	EA	1	\$	\$
13	530.1	Barricades, Signs, and Traffic Handling (Bretton Ridge)	EA	1	\$	\$
14	530.1	Barricades, Signs, and Traffic Handling (Nogalitos)	EA	1	\$	\$
15	530.1	Barricades, Signs, and Traffic Handling (Shasta)	EA	1	\$	\$
16	535.1	Hot Applied Thermoplastic Pavement Markings, 4-inch Wide Yellow Line	LF	212	\$	\$
17	535.2	Hot Applied Thermoplastic Pavement Markings, 4-inch Wide White Line	LF	12	\$	\$
18	535.7	Hot Applied Thermoplastic Pavement Markings, 24-inch Wide White Line	LF	68	\$	\$
19	550	Trench Excavation Safety Protection	LF	793	\$	\$
20	848	8" PVC Gravity Sanitary Sewer Pipe (SDR 26-2241, 160 psi) (All Depths)	LF	774	\$	\$
21	848	10" PVC Gravity Sanitary Sewer Pipe (SDR 26-2241, 160 psi) (All Depths)	LF	10	\$	\$
22	851	Adjusting Existing Manholes (with new ring & cover)	EA	2	\$	\$
23	852	Sanitary Sewer Drop Manhole (0'-6')	EA	1	\$	\$
24	852	Sanitary Sewer Manhole (0'-6')	EA	4	\$	\$
25	852	Extra Depth Manholes	VF	6	\$	\$
26	854	Sanitary Sewer Laterals, (SDR 26, ASTM 2241, 160 psi)	LF	138	\$	\$
27	854	Two Way Sanitary Cleanout	EA	6	\$	\$
28	858	Concrete Encasement, Cradles, Saddles and Collars	CY	9	\$	\$
29	864-S1	Bypass Pumping (Small Diameter Sanitary Sewers) (Broadway)	LS	1	\$	\$
30	864-S1	Bypass Pumping (Small Diameter Sanitary Sewers) (S. Gevers)	LS	1	\$	\$
31	864-S1	Bypass Pumping (Small Diameter Sanitary Sewers) (Alicia)	LS	1	\$	\$
32	864-S1	Bypass Pumping (Small Diameter Sanitary Sewers) (Bretton Ridge)	LS	1	\$	\$
33	864-S1	Bypass Pumping (Small Diameter Sanitary Sewers) (Nogalitos)	LS	1	\$	\$

2

2

2019 CMOM Package 2 (Urgent)

SAWS Job. No. 19-4533

Solicitation No. CO-00333

2

Item No.	Spec No.	Item Description	Units	Qty	Unit Price	Total Price
34	864-S1	Bypass Pumping (Small Diameter Sanitary Sewers) (Shasta)	LS	1	\$	\$
35	866	Pre Sewer Main TV Inspection (6" - 15" Dia)	LF	1977	\$	\$
36	866	Post Sewer Main TV Inspection (6" - 15" Dia)	LF	784	\$	\$
37	900	Pipe Bursting 8" Sanitary Sewer Pipe, 0'-10' depth	LF	410	\$	\$
38	900	Pipe Bursting 8" Sanitary Sewer Pipe, 0'-10' depth (DR 13.5 160 PSI)	LF	202	\$	\$
39	900	Pipe Bursting 10" Sanitary Sewer Pipe, 0'-10' depth (DR 13.5 160 PSI)	LF	581	\$	\$
40	SS 910	Manhole Rehabilitation	VF	36	\$	\$
41	1103.1	Point repairs for 6" thru 10" Diameter, (0'-10')	EA	1	\$	\$
42	1103.2	Extra Length Point Repair, All Diameter, All Depths	LF	5	\$	\$
43	1103.3	Obstruction Removal by Remote Device	EA	1	\$	\$
44	1109	Service Reconnection, (w/ open cut excavation, 0'-10' depth, including up to 10 LF of lateral)	EA	13	\$	\$
46	0104 6015	Remove Concrete (Sidewalks) (TXDOT Spec)	SY	40	\$	\$
46	0531 6001	Concrete Sidewalks (4") (TXDOT Spec)	SY	40	\$	\$
47	0531 6008	Curb Ramps (TXDOT Spec)	EA	1	\$	\$
48	6001	Portable Changeable Message Sign (TXDOT Spec)	Day	35	\$	\$
49	SS 3300	Licensed Plumber (Relay lateral in private property)	LF	80	\$	\$
			<b>Subtotal (Items 1-49)</b>		\$	
50	100	Mobilization and Demobilization, Max 10% of Items 1 - 49	LS	1	\$	
51	101	Preparing Right-of-Way., Max 5% of Items 1 - 49	LS	1	\$	
<p>Mobilization and Prep of ROW shall be limited to the maximum percentage shown. <b>If the percentage exceeds the allowable maximum stated for mobilization and or preparation of ROW, SAWS reserves the right to cap the amount at the percentages shown and adjust the extensions of the bid items accordingly.</b></p>						
<b>TOTAL BASE BID PRICE (TO INCLUDE LINE ITEMS 1 - 51)</b>					\$	

## INDEX OF SHEETS

## SUMMARY OF QUANTITIES

SHEET No.	DESCRIPTION
1	COVER SHEET
2	INDEX OF SHEETS & SUMMARY OF QUANTITIES
3 - 5	GENERAL NOTES
6	OVERALL PROJECT SITE LAYOUT
7	PRIMARY CONTROL SHEET
8	BROADWAY STREET OVERALL LAYOUT
9	SOUTH GEVERS STREET OVERALL LAYOUT
10	BROADWAY STREET SANITARY IMPROVEMENTS
11	SOUTH GEVERS STREET SANITARY IMPROVEMENTS
12	ALICIA AVE.
13	BRETTON RIDGE (PIPEBURSTING)
14 - 15	NOGALITOS ST. SAN. SEWER LAYOUT
16	SHASTA AVE. SAN. SEWER LAYOUT
17 - 22	SUGGESTED BYPASS PLANS
23 - 24	STREET REPAIR PLAN
25 - 30	TRAFFIC CONTROL PLANS
31	COSA MISCELLANEOUS CONSTRUCTION STANDARDS I
32	COSA CONCRETE DRIVEWAY STANDARDS
33	TXDOT STANDARD MISCELLANEOUS CURB AND SIDEWALK DETAILS
34 - 36	TXDOT STANDARD PED-18
37	TXDOT STANDARD TCP(1-2)-18 (MODIFIED FOR UTILITY WORK)
38	TXDOT STANDARD TCP(1-4)-18 (MODIFIED FOR UTILITY WORK)
39	COSA TREE PROTECTION DETAILS

Item No	Description	Unit	SHEET No.								Total
			10	11	12	13	14	15	16		
100	Mobilization & Demobilization	LS									1
101	Preparation of Right-of-Way	LS									1
103.1	Remove Concrete Curb (COSA Spec)	LF	12		20						32
103.3	Remove Sidewalks and Driveways (COSA Spec)	SF	54		11						65
203.1	Tack Coat	GAL	13	17	10						40
205.2	Hot Mix Asphaltic Pavement, Type B (10" Compacted Depth)	SY	108	137	83						328
205.3	Hot Mix Asphaltic Pavement, Type C (3" Compacted Depth)	SY	138	585	600						1323
208.1	Salvaging, Hauling, and Stockpiling Reclaimable Asphaltic Pavement (3" Depth)	SY		411	683						1094
413.1	Flowable Fill (COSA Spec)	CY	4					8	2	2	16
500.1	Concrete Curb (COSA Spec)	LF	12		20						32
502.1	Concrete Sidewalks (COSA Spec)	SY	6		11						17
530.1	Barricades, Signs, and Traffic Handling (Broadway St)	EA	1								1
530.1	Barricades, Signs, and Traffic Handling (S Gevers)	EA		1							1
530.1	Barricades, Signs, and Traffic Handling (Alicia)	EA			1						1
530.1	Barricades, Signs, and Traffic Handling (Bretton Ridge)	EA				1					1
530.1	Barricades, Signs, and Traffic Handling (Nogalitos)	EA					1				1
530.1	Barricades, Signs, and Traffic Handling (Shasta)	EA								1	1
535.1	Hot Applied Thermoplastic Pavement Markings, 4-inch Wide Yellow Line	LF		212							212
535.2	Hot Applied Thermoplastic Pavement Markings, 4-inch Wide White Line	LF	12								12
535.7	Hot Applied Thermoplastic Pavement Markings, 24-inch Wide White Line	LF	44	24							68
550	Trench Excavation Safety Protection	LF	265	345	174					9	793
848	8" PVC Gravity Sanitary Sewer Pipe (SDR 26-2241, 160 psi) (All Depths)	LF	265	335	174						774
848	10" PVC Gravity Sanitary Sewer Pipe (SDR 26-2241, 160 psi) (All Depths)	LF		10							10
851	Adjusting Existing Manholes (with new ring & cover)	EA				1		1			2
852	Sanitary Sewer Drop Manhole (0'-6")	EA			1						1
852	Sanitary Sewer Manhole (0'-6")	EA	2	2							4
852	Extra Depth Manholes	VF	2	2	2						6
854	Sanitary Sewer Laterals, (SDR 26, ASTM 2241, 160 psi)	LF	9		129						138
854	Two Way Sanitary Cleanout	EA	1		5						6
858	Concrete Encasement, Cradles, Saddles and Collars	CY			9						9
864-S1	Bypass Pumping (Small Diameter Sanitary Sewers) (Broadway)	LS	1								1
864-S1	Bypass Pumping (Small Diameter Sanitary Sewers) (S. Gevers)	LS		1							1
864-S1	Bypass Pumping (Small Diameter Sanitary Sewers) (Alicia)	LS			1						1
864-S1	Bypass Pumping (Small Diameter Sanitary Sewers) (Bretton Ridge)	LS				1					1
864-S1	Bypass Pumping (Small Diameter Sanitary Sewers) (Nogalitos)	LS					1				1
864-S1	Bypass Pumping (Small Diameter Sanitary Sewers) (Shasta)	LS								1	1
866	Pre Sewer Main TV Inspection (6" - 15" Dia)	LF	265	345	174	202	287	294	410		1977
866	Post Sewer Main TV Inspection (6" - 15" Dia)	LF	265	345	174						784
900	Pipe Bursting 8" Sanitary Sewer Pipe, 0'-10' depth	LF							410		410
900	Pipe Bursting 8" Sanitary Sewer Pipe, 0'-10' depth (DR 13.5 160 PSI)	LF				202					202
900	Pipe Bursting 10" Sanitary Sewer Pipe, 0'-10' depth (DR 13.5 160 PSI)	LF					287	294			581
SS 910	Manhole Rehabilitation	VF			6	9	9		12		36
1103.1	Point repairs for 6" thru 10" Diameter, (0'-10')	EA					1				1
1103.2	Extra Length Point Repair, All Diameter, All Depths	LF					5				5
1103.3	Obstruction Removal by Remote Device	EA					1				1
1109	Service Reconnection, (w/ open cut excavation, 0'-10' depth, including up to 10 LF of lateral)	EA			2			3	8		13
0104 6015	Remove Concrete (Sidewalks) (TXDOT Spec)	SY					40				40
0531 6001	Concrete Sidewalks (4") (TXDOT Spec)	SY					40				40
0531 6008	Curb Ramps (TXDOT Spec)	EA					1				1
6001	Portable Changeable Message Sign (TXDOT Spec)	Day					21	14			35
SS 3300	Licensed Plumber (Relay lateral in private property)	LF			80						80

1



100% SUBMITTAL

**MAESTAS**  
8122 DATAPoint DR., STE. 840 SAN ANTONIO, TX 78229  
 (210) 366-1988 TBPE No.: F-333 TBPLS No.: 10194506

No.	Revision	Drawn	Approved	Date

**REVISIONS**

2019 CMOM PACKAGE 2  
(URGENT)  
**INDEX OF SHEETS & SUMMARY OF QUANTITIES**  
SHEET 1 OF 1

DEVELOPER: SAN ANTONIO WATER SYSTEM  
 CONT. BUDGET PROJ. # 19-4533

SUBMITTED \_\_\_\_\_  
 APPROVED \_\_\_\_\_

MAP No. \_\_\_\_\_ SHEET 2  
 SECT. No. \_\_\_\_\_ OF 39  
 DR. CAD CK. ETM JOB No. 19-4533

Z:\Projects\1067-03\_SAVS IDIQ W09-2019 CMOM Package 2\06 - CADD Files\06.35 - Cover SH\1067-03-INDX-SUM-SEW-01.dgn 11:48:49 PM 7/20/2020



**SAWS GENERAL CONSTRUCTION NOTES**

1. All materials and construction procedures within the scope of this contract shall be approved by the San Antonio Water System (SAWS) and comply with the Plans, Specifications, General Conditions and with the following as applicable:
  - A. Current Texas Commission on Environmental Quality (TCEQ) "Design Criteria for Domestic Wastewater System", Texas Administrative Code (TAC) Title 30 Part 1 Chapter 217 and "Public Drinking Water", TAC Title 30 Part 1 Chapter 290.
  - B. Current TXDOT "Standard Specifications for Construction of Highways, Streets and Drainage."
  - C. Current "San Antonio Water System Standard Specifications for Water and Sanitary Sewer Construction."
  - D. Current City of San Antonio "Standard Specifications for Construction."
  - E. Current City of San Antonio "Utility Excavation Criteria Manual" (UECM).
2. The Contractor shall obtain SAWS Standard Details from SAWS website, [http://www.saws.org/business\\_center/specs](http://www.saws.org/business_center/specs), unless otherwise noted within design plans.
3. The Contractor is to notify and make arrangements with the SAWS Construction Inspection Division at (210) 233-3500, and provide notification procedures the Contractor will use to notify affected home residents and/or property owners 48 hours prior to excavation.
4. Locations and depths of existing utilities and service laterals shown on the plans are understood to be approximate. Actual locations and depths must be field verified by the Contractor at least 1 week prior to construction. It shall be the Contractor's responsibility to locate utility service lines as required for construction and to protect them during construction at no cost to SAWS.
5. The Contractor shall verify the exact location of underground utilities and drainage structures at least 1-2 weeks prior to construction whether shown on plans or not. Please allow up to 7 business days for locates requesting pipe location markers on SAWS facilities. The following contact information are supplied for verification purposes:
 

San Antonio Water System:  
SAWS Utility Locates: <http://www.saws.org/ServiceLocates>  
COSA Drainage (210) 206-8433  
COSA Traffic Signal Operations (210) 207-7720  
Texas State Wide One Call Locator 1-800-545-6005 or 811
6. The Contractor shall be responsible for restoring existing fences, curbs, streets, driveways, sidewalks, landscaping and structures to its original or better condition as a result of damages done by the project's construction.
7. All work in Texas Highway Department and Bexar County right-of-way shall be done in accordance with respective construction specifications and permit.
8. The Contractor shall comply with City of San Antonio's ordinances when excavating near trees.
9. The Contractor shall not place any waste materials in the 100-year Flood Plain without first obtaining an approved Flood Plain Permit.
10. Any work completed without prior written authorization which is not included in these plans and specifications will not be compensated by the San Antonio Water System.
11. Holiday Work: Contractors will not be allowed to perform SAWS work on SAWS recognized holidays. Request should be sent to [constworkreq@saws.org](mailto:constworkreq@saws.org).  
  
Weekend Work: Contractors are required to notify the SAWS Inspection Construction department 48 hours in advance to request weekend work. Request should be sent to [constworkreq@saws.org](mailto:constworkreq@saws.org).  
  
Any and all SAWS utility work installed without holiday/weekend approval will be subject to be uncovered for proper inspection.
12. PRE CON SITE VIDEO: Before the start of any construction. The site must be video recorded by the contractor with one copy submitted to SAWS Inspections. A pre-site video will provide accurate documentation of the existing conditions (NSPI).
13. POWER POLE BRACING: Contractors should be advised that there are existing overhead utility poles along the project corridor. Contractors should further be advised that if the distance from the outside face of a utility trench to the face of a utility pole is less than 5 feet, said utility pole is subject to bracing, based on a determination made by utility pole owner. Costs incurred by contractor for bracing of these utility poles is subsidiary to that respective utility company's work. It is advisable for the contractor to review the construction documents, and visit the construction site to determine potential impacts.

14. Prior to tie-ins, any shutdowns of existing mains of any size must be coordinated with the SAWS Inspection and/or SAWS Production groups at least one week or more in advance of the shutdown. The Contractor must also provide a sequence of work as related to the tie-ins; this is at no additional cost to SAWS or the project and it is the responsibility of the Contractor to sequence the work accordingly. SAWS Production Control Center (210) 233-2016.
15. Asbestos Cement (AC) pipe, also known as transite pipe which is known to contain asbestos-containing material (ACM), maybe located within the project limits. Special waste management procedures and health and safety requirements will be applicable when removal and/or disturbance of this pipe occurs, Payment for such work is to be made under Special Specification Item No. 3000, "Special Specification for Handling Asbestos Cement Pipe".
16. The Contractor is responsible for ensuring that no sanitary sewer overflow (SSO) occurs as a result of their work. All contractor personnel responsible for SSO prevention and control shall be trained on proper response. Should an SSO occur, the contractor shall:
  - A. Identify the source of the SSO and notify SAWS Emergency Operations Center (EOC) immediately at (210) 704-7297. Provide the address of the spill and an estimated volume or flow.
  - B. Attempt to eliminate the source of the SSO.
  - C. Contain sewage from the SSO to the extent of preventing a possible contamination of waterways.
  - D. Clean up spill site (return contained sewage to the collection system if possible) and properly dispose of contaminated soil/materials.
  - E. Clean the affected sewer mains and remove any debris.
  - F. Meet all post-SSO requirements as per the EPA Consent Decree, including line cleaning and televising the affected sewer mains (at SAWS direction) within 24 hours.

Should the Contractor fail to address an SSO immediately and to SAWS satisfaction, they will be responsible for all costs incurred by SAWS, including any fines from EPA.

No separate measurement or payment shall be made for this work. All work shall be done according to guidelines set by the TCEQ and SAWS.
17. The Contractor shall provide bypass pumping of sewage around each segment of pipe to be replaced, in accordance with SAWS Special Specification Item No. 864-S1, "Bypass Pumping Small Diameter Sanitary Sewers" and Item No. 864-S2, "Bypass Pumping Large Diameter Sewer". Payment for such work will be made under the "Sanitary Sewers (Bypass Pumping)" (Lump Sum) as per SAWS Standard Specification.
18. Prior to tie-ins, any shutdowns of existing force mains of any size must be coordinated with the SAWS Construction Inspection Division at (210) 233-3500 and/or SAWS Production groups at least one week or more in advance of the shutdown. The Contractor must also provide a sequence of work as related to the tie-ins; this is at no additional cost to SAWS or the project and it is the responsibility of the Contractor to sequence the work accordingly.
19. ELEVATIONS POSTED FOR TOP OF MANHOLES ARE FOR REFERENCE ONLY: It shall be the responsibility of the Contractor to make allowances and adjustments for top of manholes to match the finished grade of the project's improvements. (NSPI).
20. The Contractor shall notify Juan C. Ramirez at (210) 233-3558 and SAWS E.O.C. at (210) 233-2015 a minimum of 72 hours, not counting weekends or SAWS holidays, before working on the pipe or manhole, in order to have SAWS remove the Smart Cover. Any damage done to the Smart Cover will be charged to the Contractor through a change order.

**MISCELLANEOUS GENERAL NOTES**

1. All proposed sanitary sewer pipe shall be green dyed pipe - ASTM D2241-05, SDR 26, 160 psi.
2. All fittings and appurtenances not identified by a specific pay item shall be included in the bid price for the pipeline.
3. The Contractor shall protect existing sanitary sewer until abandoned.
4. The Contractor shall be responsible for maintaining continuous flows and reconnecting all existing services as pipe is laid.
5. All limits for work beyond what is considered incidental to normal utility construction will be addressed by the SAWS Inspector. All communication from SAWS will be coordinated through the SAWS Inspector. SAWS Inspector will also determine if additional compensation is warranted if limits exceed incidentals.

6. Contractor shall protect and/or repair (if damaged) any existing water/sewer service laterals and irrigation shown or not shown (NSPI).
7. Contractor shall maintain vehicular access through all driveways for emergency access.
8. All property lines shown are approximate.
9. Contractor to protect existing signs that are not specifically called out on the plans as remove and replace (NSPI). Provide temporary signs and salvage and replace signs that interfere with construction of sewer mains and laterals. (NSPI).
10. The Contractor shall provide erosion control measures to prevent pollution of storm waters originating up gradient, and prevent downstream pollution by contaminated stormwater runoff from the site.
11. Contractor must field verify all sanitary sewer depths, distances, pipe sizes, grades, and laterals before start of construction.
12. Contractor shall coordinate with SAWS and property owners to access to sites located in easements and private properties.
13. Contractor shall pre-televising all sanitary sewers prior to Construction.
14. Contractor shall contact COSA regarding any sidewalk and street closures.
15. It is the Contractor's responsibility and expense to coordinate and acquire his own staging area, including parking area to accommodate construction personnel vehicle parking. Signed agreement with property owner shall be submitted to SAWS prior to mobilizing.
16. Service Lateral Connections:
  - A. The exact location and elevation of the service laterals and manholes shall be field verified by the Contractor.
  - B. A minimum of 3 feet of cover is to be maintained over the sanitary sewer laterals at subgrade.
  - C. All sewer lateral services for future connections as identified on plan and profiles shall be capped and sealed.
  - D. The Contractor shall be responsible for disconnecting each existing service line from the existing main and re-connecting the service to the new service main. The Contractor shall be responsible for maintaining continuous service.
  - E. Laterals shall be constructed to serve all existing houses and vacant lots.
17. Contractor is required to abide by all requirements of easement documents and landowner requirements throughout the project duration.
18. All sanitary sewer laterals shall be provided with a two-way clean out to be placed in the field as directed by SAWS inspector or engineer.

Z:\Projects\1067-03\_SAWS IDIQ\_W09-2019\_CMOM Package 2\06 - CADD Files\06.35 - Cover Sheet\1067-03-GEN-INTS-SEW-01.dgn 11:48:54 PM 7/20/2020

100% SUBMITTAL

**MAESTAS**  
8122 DATAPoint DR., STE. 840 SAN ANTONIO, TX 78229  
(210) 366-1988 TBPE No.: F-333 TBPLS No.: 10194506

No.	Revision	Drawn	Approved	Date



<b>REVISIONS</b>	
2019 CMOM PACKAGE 2 (URGENT)	
<b>GENERAL NOTES SHEET 1 OF 3</b>	
DEVELOPER:	SAN ANTONIO WATER SYSTEM
CONT.	BUDGET PROJ. # 19-4533
SUBMITTED	
APPROVED	
MAP No.	
SECT. No.	
DR. CAD	CK. ETM
JOB No.	19-4533
SHEET	3
OF	39



# GENERAL CONSTRUCTION NOTES

## TREE PROTECTION AND PRESERVATION GENERAL NOTES

1. No utility or street excavation work shall begin in areas where tree preservation and treatment measures have not been completed and approved.
2. Tree protection fencing shall be required. Tree protection fencing shall be installed, maintained and repaired by the contractor during site construction. During construction activity, at least a six-inch layer of coarse mulch shall be placed and maintained over the root protection zone (no separate pay item).
3. The contractor shall avoid cutting roots larger than one inch in diameter when excavating near existing trees. Excavation in the vicinity of trees shall proceed with caution. The contractor shall contact the city inspector for guidance.
4. Roots will be cut with a rock saw or by hand, not by an excavator or other road construction equipment.
5. All curb and sidewalk work shall use alternative construction methods to minimize extensive root damage to trees.
6. Exposed roots shall be covered at the end of the day using techniques such as covering with soil, mulch, or wet burlap.
7. No equipment, vehicles or materials shall operate or be stored within the root protection zone of any tree near the project. Root protection zone is 1 foot of radius per inch of tree's diameter. A 10-inch diameter tree would have a 10-foot radius root protection zone around the tree. Roots or branches in conflict with the construction shall be cut cleanly according to proper pruning methods. Oak wounds shall be painted over within 30 minutes to prevent oak wilt.
8. Saplings, shrubs or bushes to be cleared from the protected root zone area of a large tree shall be removed by hand as designated by the inspector.
9. No wires, nails or other material may be attached to protected trees.
10. Trees, tree limbs, bushes and shrubs located in the city street or alley right-of-way or permanent easements which interfere with proposed construction activities shall be properly pruned following the ANSI a-300 standards for pruning. All tree pruning shall be completed by a City of San Antonio tree maintenance licensed contractor (article 21-171, city code) only after approval from the C.O.S.A. inspector.
11. No excessive tree trimming will be permitted.
12. All debris generated by the pruning and trimming of the trees and / or bushes shall become the property of the contractor and shall be disposed of properly (no separate pay item).
13. Trees must be maintained in good health throughout the construction process. Maintenance may include, but not limited to: watering the root protection zone, washing foliage, fertilization, pruning, additional mulch applications and other maintenance as needed on the project.
14. Any tree removal shall be approved by the city arborist. (210-207-0278)
15. Trees which are damaged or lost due to the contractor's negligence during construction shall be mitigated to the city's satisfaction.
16. Tree planting for mitigation or enhancement: all planted trees shall be maintained in a healthy condition at all times. This includes irrigation, fertilizing, pruning and other maintenance as needed on the project. Trees that die within twelve (12) months shall be replaced with a tree of equal size and species.

## VIA NOTES

1. The contractor shall not remove or adjust any VIA assets.
2. If for any unforeseen reason the removal of any VIA assets is needed, the contractor must notify VIA Dispatch at (210) 362-5020 and Mark Spaulding at (210) 441-9078 as soon as possible.
3. The contractor must notify VIA Dispatch at (210) 362-5020 and Mark Spaulding at (210) 441-9078 a minimum of one (1) day before any work that requires the temporary closure of a bus stop.
4. The contractor must notify VIA Dispatch at (210) 362-5020 and Mark Spaulding at (210) 441-9078 when any temporarily closed bus stop can be reopened.
5. The contractor will be liable for any damages to VIA assets not removed by VIA.
6. The contractor is required to replace all flatwork removed or damaged in the course of executing the contract unless otherwise noted by VIA.
7. The contractor will be responsible for protecting VIA facilities adjacent to work area.

### CoSA Storm Water and Floodplain Notes

1. Prior to construction, the Contractor shall obtain all required storm water permits, fees, and approvals. No construction or fabrication shall begin until the Contractor has received and thoroughly reviewed all permits required for construction in drainage easements, right-of-ways, and floodplains.
2. The Contractor shall notify Storm Water Engineering at least 24 hours prior to the installation of any drainage facility within a drainage easement or street right-of-way not indicated on the construction plans.
3. The Contractor is responsible for protecting existing drainage facilities from damage. Any damage to existing drainage systems, whether or not shown on the plans, shall be the responsibility of the Contractor to repair at his expense. The Contractor shall notify Storm Water Engineering at 210-206-8433 as soon as conflicts with utilities are encountered or any drainage system is damaged during construction.
4. Construction spoils will not be allowed to be deposited anywhere within a drainage easement, right-of-way or floodplain within the limits of the project and shall be disposed offsite in compliance with current applicable regulations.
5. No structure, fences, walls, landscaping, or other obstructions that impede drainage shall be placed within the limits of the drainage easements shown on the construction documents.
6. Upon completion of trenching, the area will be backfilled and compacted to its original condition. Trenches/bore pits to be open and unattended longer than 24 hours shall be protected to withstand all hydrodynamic and hydrostatic forces and prevent downstream impacts. Trenches/bore pits to be open longer than 30 days after starting excavation shall be backfilled with a semi-permanent repair backfill.



100% SUBMITTAL

# MAESTAS

8122 DATAPoint DR., STE. 840 SAN ANTONIO, TX 78229  
(210) 366-1988 TBPE No.: F-333 TBPLS No.: 10194506


▲	CoSA Storm Water Notes added	CAD	ETM	7/20/2020
No.	Revision	Drawn	Approved	Date

**REVISIONS**

2019 CMOM PACKAGE 2  
(URGENT)

**GENERAL NOTES  
SHEET 3 OF 3**

DEVELOPER: SAN ANTONIO WATER SYSTEM  
CONT. BUDGET PROJ. # 19-4533

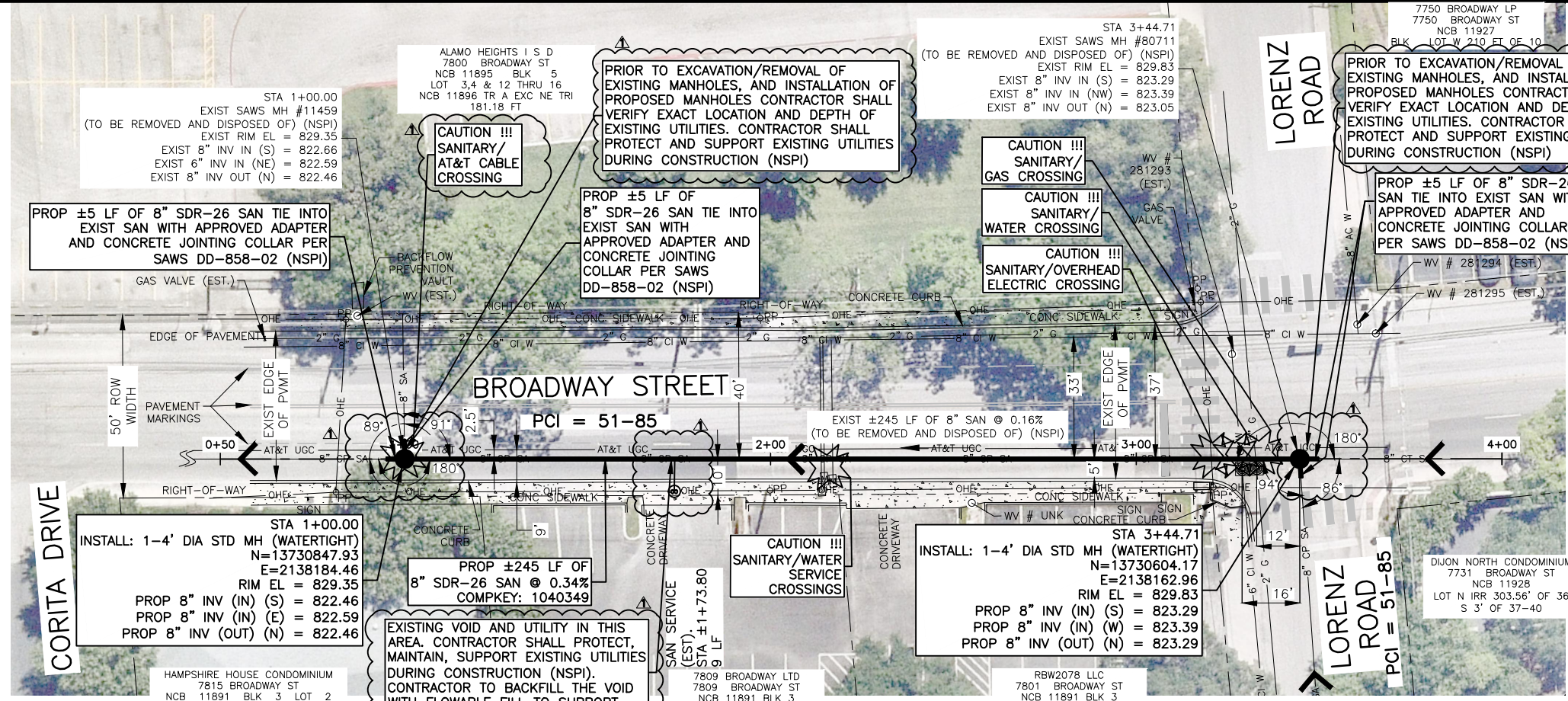
SUBMITTED \_\_\_\_\_  
APPROVED \_\_\_\_\_

MAP No.		SHEET	
SECT. No.		5	
DR. CAD	CK. ETM	JOB No.	19-4533

OF 39



BGE, INC. G:\TX\Projects\SAWS\SAWS - 2019 CMOM Package 203\_CADD\01\_Sheets\Sewer\CMOM\_BROADWAY\_FNP.dwg Jul 20, 2020 4:13pm ehubd

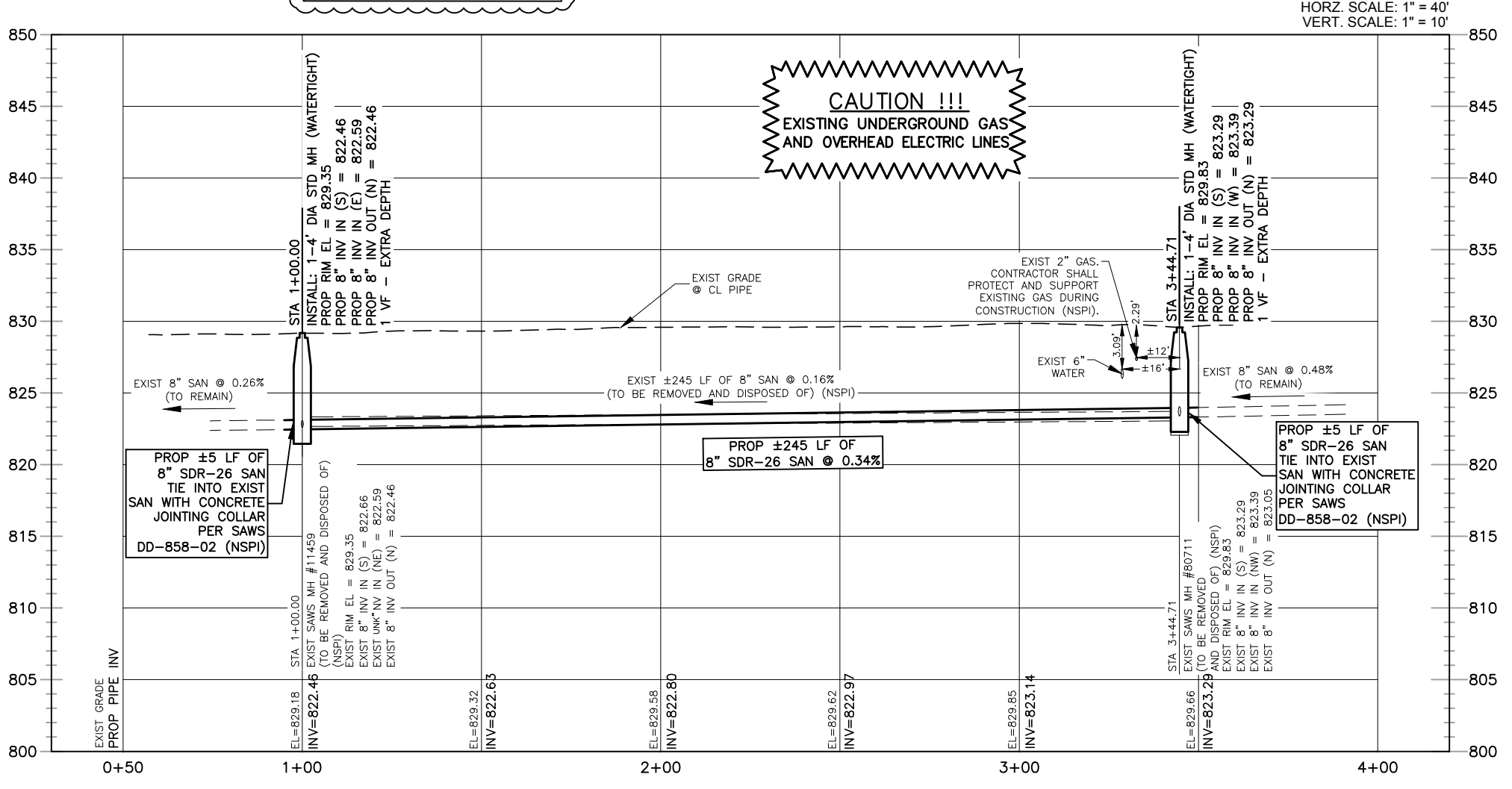


- NOTES:**
1. LOCATIONS AND DEPTHS OF EXISTING UTILITIES AND SERVICE LATERALS SHOWN ON THE PLANS ARE UNDERSTOOD TO BE APPROXIMATE. ACTUAL LOCATIONS AND DEPTHS MUST BE FIELD VERIFIED BY THE CONTRACTOR AT LEAST 1 WEEK PRIOR TO CONSTRUCTION. IT SHALL BE THE CONTRACTOR'S RESPONSIBILITY TO LOCATE UTILITY SERVICE LINES AS REQUIRED FOR CONSTRUCTION AND TO PROTECT THEM DURING CONSTRUCTION AT NO COST TO SAWS.
  2. PROPOSED IMPROVEMENTS ARE LOCATED WITHIN KARST ZONE 3 IN CLOSE PROXIMITY TO KARST ZONE 1. ADDITIONAL INSPECTION REQUIRED BEFORE AND DURING CONSTRUCTION DUE TO KARST ZONE PROXIMITY (NSPI).
  3. CONTRACTOR SHALL COORDINATE WORKING HOURS WITH ALAMO HEIGHTS ISD (7800 BROADWAY STREET) PRIOR TO THE START OF CONSTRUCTION. CONTRACTOR SHALL COMPLETE ALL WORK WHEN SCHOOL IS NOT IN SESSION IF POSSIBLE.
  4. CONTRACTOR SHALL REMOVE AND DISPOSE OF EXISTING SEWERLINE AS REQUIRED FOR THE INSTALLATION OF PROPOSED SEWERLINE AND MANHOLES (NSPI).
  5. DIMENSIONS SHOWN ON THE PLANS ARE UNDERSTOOD TO BE APPROXIMATE. ACTUAL DIMENSIONS MUST BE FIELD VERIFIED BY THE CONTRACTOR (NSPI).
  6. IF FOR ANY UNSEEN REASON THE REMOVAL OF ANY VIA ASSETS IS NEEDED, THE CONTRACTOR MUST NOTIFY

**TRENCH EXCAVATION SAFETY PROTECTION:**

CONTRACTOR AND/OR CONTRACTOR'S INDEPENDENTLY RETAINED EMPLOYEE OR STRUCTURE/DESIGN/GEOTECHNICAL/SAFETY/EQUIPMENT CONSULTANT, IF ANY, SHALL REVIEW THESE PLANS AND AVAILABLE GEOTECHNICAL INFORMATION AND THE INFORMATION AND THE ANTICIPATED INSTALLATION SITE(S) WITHIN THE PROJECT WORK AREA IN ORDER TO IMPLEMENT CONTRACTOR'S TRENCH EXCAVATION SAFETY PROTECTION SYSTEMS, PROGRAMS AND/OR PROCEDURES. THE CONTRACTOR'S IMPLEMENTATION OF THE SYSTEMS, PROGRAMS AND/OR PROCEDURES SHALL PROVIDE FOR ADEQUATE TRENCH EXCAVATION SAFETY PROTECTION THAT COMPLIES WITH, AS A MINIMUM, OSHA STANDARDS FOR TRENCH EXCAVATIONS. SPECIFICALLY, CONTRACTOR AND/OR CONTRACTOR'S INDEPENDENTLY RETAINED EMPLOYEE OF SAFETY CONSULTANT SHALL IMPLEMENT A TRENCH SAFETY PROGRAM IN ACCORDANCE WITH OSHA STANDARDS GOVERNING THE PRESENCE AND ACTIVITIES OF INDIVIDUALS WORKING IN AND AROUND TRENCH EXCAVATION.

SPEC NO.	UNIT DESCRIPTION	UNIT	QUANTITY
103.1	Remove Concrete Curb (COSA Spec)	LF	12
103.3	Remove Sidewalks and Driveways (COSA Spec)	SF	54
203.1	Tack Coat	GAL	13
205.2	Hot Mix Asphaltic Pavement, Type B (10" Compacted Depth)	SY	108
205.3	Hot Mix Asphaltic Pavement, Type C (3" Compacted Depth)	SY	138
413.1	Flowable Fill (COSA Spec)	CY	4
500.1	Concrete Curb (COSA Spec)	LF	12
502.1	Concrete Sidewalks (COSA Spec)	SY	6
530.1	Barriades, Signs, and Traffic Handling (Broadway St)	EA	1
535.2	Hot Applied Thermoplastic Pavement Markings, 4-inch Wide White Line	LF	12
535.7	Hot Applied Thermoplastic Pavement Markings, 24-inch Wide White Line	LF	44
550	Trench Excavation Safety Protection	LF	265
848	8" PVC Gravity Sanitary Sewer Pipe (SDR 26-2241, 160 psi) (All Depths)	LF	265
852	Sanitary Sewer Manhole (0'-6")	EA	2
852	Extra Depth Manholes	VF	2
854	Sanitary Sewer Laterals, (SDR 26, ASTM 2241, 160 psi)	LF	9
854	Two Way Sanitary Cleanout	EA	1
864-S1	Bypass Pumping System (Small Diameter Sanitary Sewers) (Broadway)	LS	1
866	Pre Sewer Main Television Inspection (6"-15" Dia)	LF	265
866	Post Sewer Main Television Inspection (6"-15" Dia)	LF	265



**LEGEND**

- EXIST. WATER MAIN: 6" C.I.W.
- EXIST. WATER METER: M
- GAS MAIN: 2" G
- EXIST. SANITARY SEWER: 8" SA
- PROP. SANITARY SEWER: 8" SA
- UTILITY POLE: O
- OH ELECTRIC CABLE: OHE
- OH TELEPHONE CABLE: OHT
- APPARENT RIGHT OF WAY: ---
- PROPERTY LINES: - - -
- CHAINLINK FENCE: ---
- WROUGHT IRON FENCE: ---
- SUGGESTED BYPASS: - - - - -
- UTILITY CROSSING: \*
- BORE TEST HOLE LOCATION: ⊙

**BGE, Inc.**  
7330 San Pedro, Suite 202 San Antonio, Tx 78216  
Tel: 210-581-3600 • www.bgeinc.com  
TBPE Registration No. F-1046

**MAESTAS**  
8122 DATAPOINT DR., STE. 840 SAN ANTONIO, TX 78229  
(210) 366-1988 TBPE No.: F-333 TBPLS No.: 10154506

**STATE OF TEXAS**  
STEVEN H. THAI  
113332  
LICENSED PROFESSIONAL ENGINEER

7/20/20

REVISION	By	Date
1	SAWS	7/20/20

**REVISIONS**

2019 CMOM  
PACKAGE 2 (URGENT)  
BROADWAY STREET  
SANITARY IMPROVEMENTS

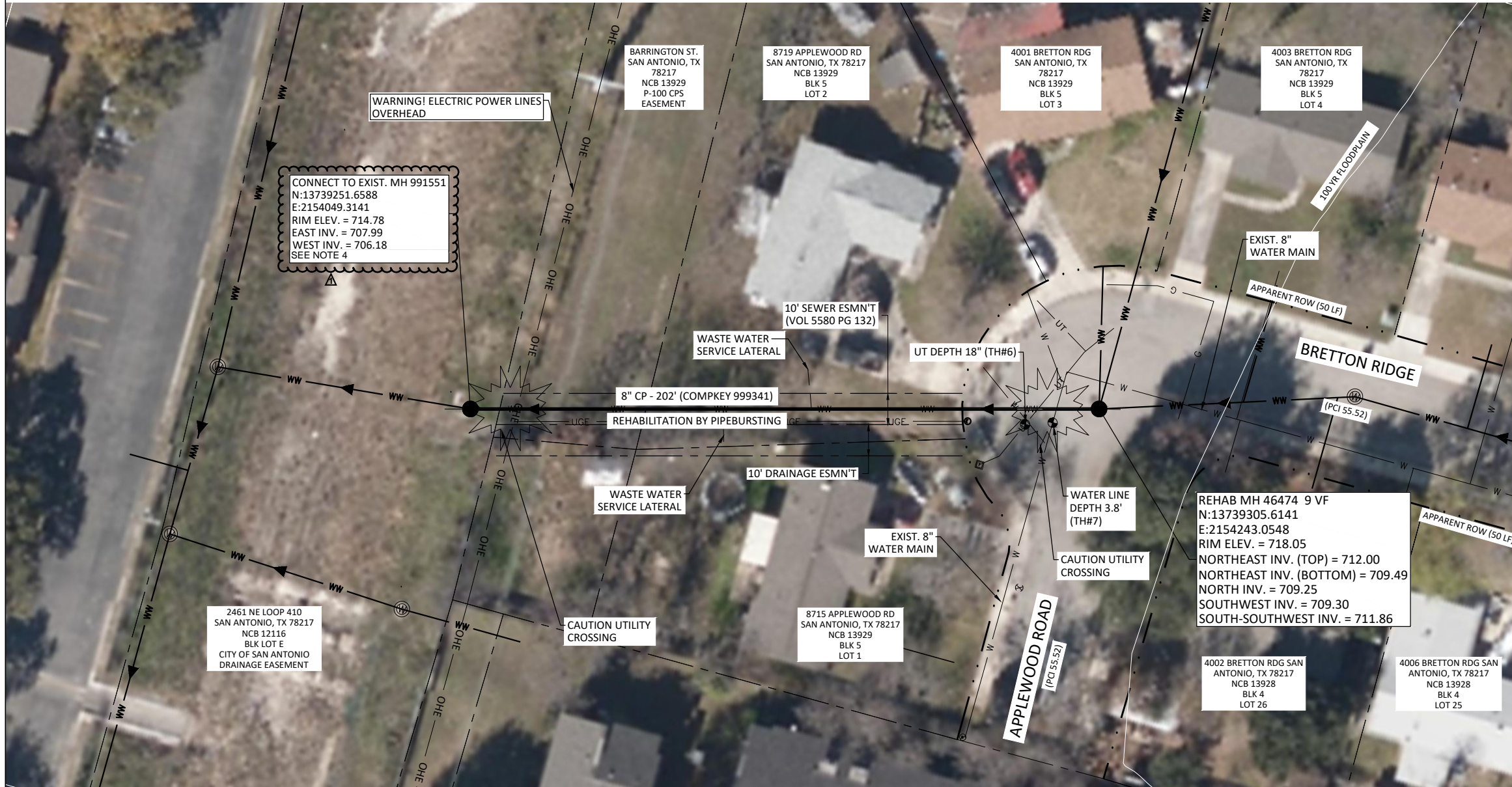
DEVELOPER: SAN ANTONIO WATER SYSTEM  
CONT. BUDGET PROJ. # 19-4533

SUBMITTED: \_\_\_\_\_  
APPROVED: \_\_\_\_\_

MAP No. 168606  
SECT. No. \_\_\_\_\_  
DR. SHT CK. AH JOB No. 19-4533

SHEET 10 OF 39





**CAUTION!!!**  
 EXISTING UNDERGROUND AND OVERHEAD UTILITIES IN THE AREA. 48 HOURS PRIOR TO CONSTRUCTION CONTACT 1-800-DIG-TESS

0 20 40  
 SCALE: 1" = 40'



FREESSE AND NICHOLS, INC. TEXAS  
 REGISTERED ENGINEERING FIRM F-2144

**LEGEND**

EXIST. WATER MAIN	— 7/17/2020
GAS MAIN	— G —
EXIST. SANITARY SEWER	— SA —
OH ELECTRIC CABLE	— OHE —
UNDGR TELEPHONE	— UT —
APPARENT RIGHT OF WAY	- - -
PROPERTY LINES	- - -

**NOTES**

DUE TO FEDERAL REGULATION TITLE 49, PART 92.181 CPS MUST MAINTAIN ACCESS TO GAS VALVES AT ALL TIMES. THE CONTRACTOR MUST PROTECT AND WORK AROUND ANY GAS VALVES THAT ARE IN THE PROJECT AREA.

**FREESSE AND NICHOLS**

9601 McAllister Freeway, Suite 1008  
 San Antonio, Texas 78216  
 Phone - (210) 298-3800  
 Web - www.freese.com

**MAESTAS**

8122 DATAPoint DR., STE. 840 SAN ANTONIO, TX 78229  
 (210) 366-1988 TBPE No.: F-333 TBPLS No.: 10194506

**ESTIMATED QUANTITIES**

ITEM	DESCRIPTION	UNIT	EST
530.1	Barricades, Signs, and Traffic Handling (Brettton Ridge)	EA	1
866	Pre Sewer Main TV Inspection (6" - 15" Dia)	LF	202
900	Pipe Bursting 8" Sanitary Sewer Pipe, 0' - 10' depth (DR 13.5 160 PSI)	LF	202
SS 910	Manhole Rehabilitation	VF	9
1109	Service Reconnection, (w/Open Cut Excavation, 0'-10' depth. Including up to 10 LF of lateral)	EA	2
851	Adjusting Existing Manholes (with new ring & cover)	EA	1*
864-S1	Bypass Pumping (Small Diameter Sanitary Sewers) (Brettton Ridge)	LS	1

\* SEE NOTE 4

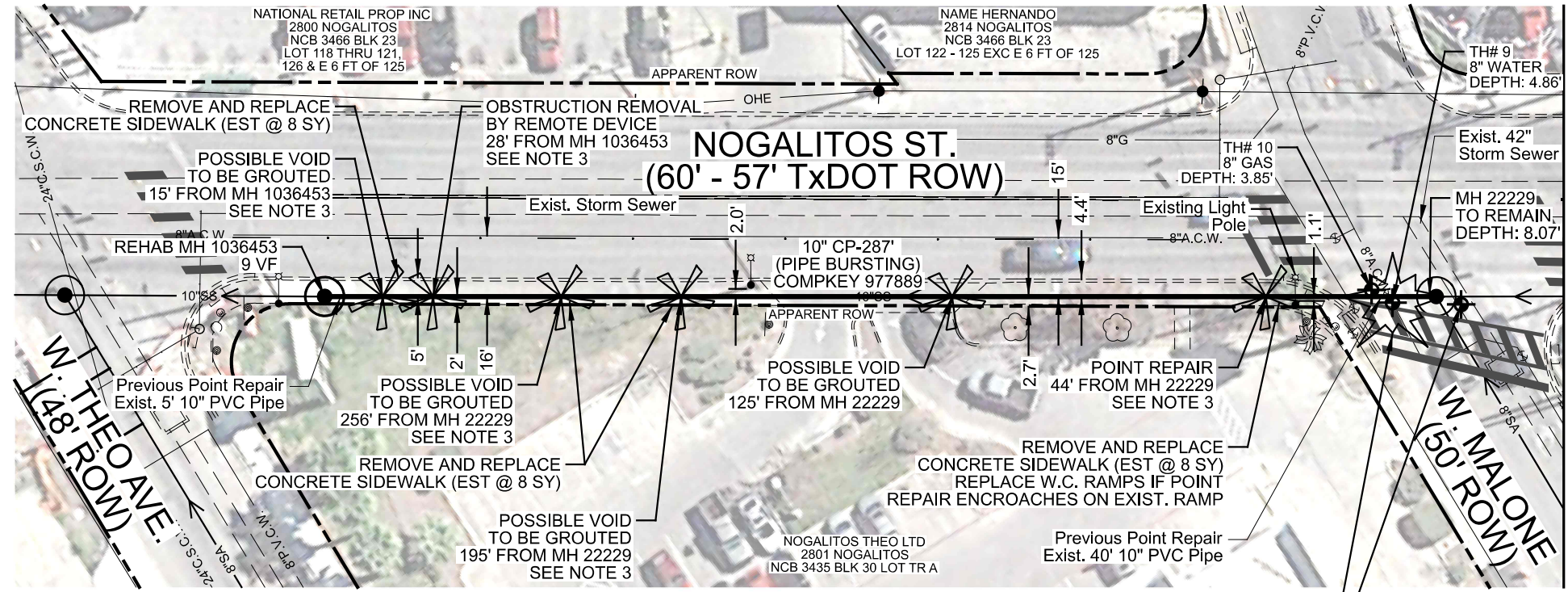
- NOTES:**
- THE CONTRACTOR SHALL PROTECT EXISTING CONCRETE CHANNEL DURING CONSTRUCTION. ANY DAMAGE AND REPAIR SHALL BE COORDINATED THROUGH THE CITY OF SAN ANTONIO AND SHALL BE AT THE CONTRACTOR'S EXPENSE.
  - THE CONTRACTOR SHALL COORDINATE WITH THE PROPERTY OWNER PRIOR TO SERVICE DISCONNECTS OR SERVICE INTERRUPTIONS.
  - COORDINATION WITH THE PROPERTY OWNER AT 8719 APPLEWOOD RD IS REQUIRED TO ACCESS AND WORK IN SEWER EASEMENT. CONTRACTOR SHALL REPAIR AND REPLACE ANY PHYSICAL DAMAGE TO THE PROPERTY OWNER'S FENCE SO IT IS RESTORED TO SUBSTANTIALLY THE SAME CONDITION OR BETTER AS DOCUMENTED IN THE PRE-CONSTRUCTION VIDEO. ALL REPAIRS SHALL BE AT THE CONTRACTOR'S EXPENSE.
  - CONTRACTOR TO VERIFY THE CONDITION OF MANHOLE 991551 AND CONFIRM WITH INSPECTOR IF THE MANHOLE REQUIRES TO BE ADJUSTED PER SAWS STANDARD SPECIFICATION NO. 851.

ACAD Ref: 23.04 (LMS Tech)  
 Filename: N:\WTU\Drawings\20200325\WTU-SAWS-PB01.dwg  
 Last Saved: 6/26/2020 1:29 PM. Saved By: 03576

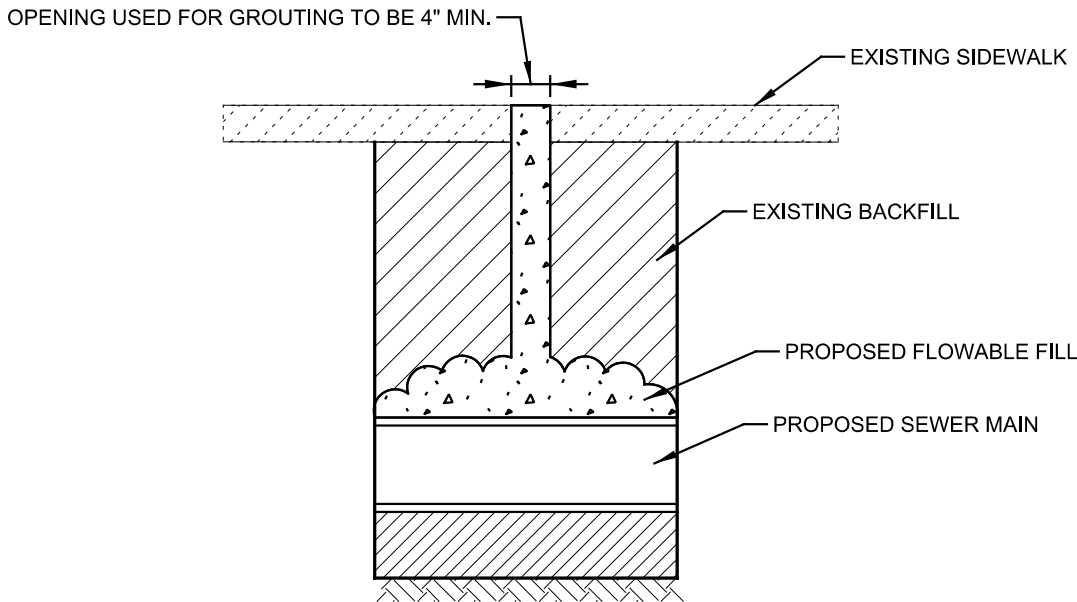
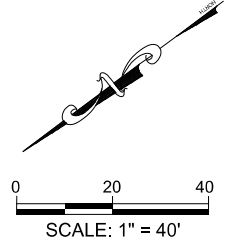
ADDENDUM 1		REV	7/17/2020
No.	Revision	Drawn	Approved
<b>REVISIONS</b>			
<b>2019 CMOM PACKAGE 2 (URGENT)</b> <b>BRETTTON RIDGE</b> <b>(PIPEBURSTING)</b>			
DEVELOPER: SAN ANTONIO WATER SYSTEM		CONT. BUDGET PROJ. # 19-4533	
SUBMITTED _____			
APPROVED _____			
MAP No.	SAWS MAP# 184612	SHEET	
SECT. No.		13	
DR. EL CK. DTB	JOB No. 19-4533	OF 39	



Z:\Projects\1067-03\_SAVS IDIQ WC9-2019 CMOM Package 2.06 - CADD Files\06.70 - Utilities\1067-03-SEW-PLAN-NOGALITOS-01.dgn 4:35:05 PM 7/20/2020



ESTIMATED QUANTITIES			
ITEM	DESCRIPTION	UNIT	EST
413.1	Flowable Fill (COSA Spec)	CY	8
530.1	Barricades, Signs, and Traffic Handling (Nogalitos)	EA	1
864-S1	Bypass Pumping (Small Diameter Sanitary Sewers) (Nogalitos)	LS	1
866	Pre Sewer Main TV Inspection (6"- 15" Dia)	LF	287
900	Pipe Bursting 10" Sanitary Sewer Pipe, 0'-10' depth (DR 13.5 160 PSI)	LF	287
SS 910	Manhole Rehabilitation	VF	9
1103.1	Point repairs for 6" thru 10" Diameter, (0'-10')	EA	1
1103.2	Extra Length Point Repair, All Diameter, All Depths	LF	5
1103.3	Obstruction Removal by Remote Device	EA	1
0104 6015	Remove Concrete (Sidewalks) (TXDOT Spec)	SY	40
0531 6001	Concrete Sidewalks (4") (TXDOT Spec)	SY	40
0531 6008	Curb Ramps (TXDOT Spec)	EA	1
6001	Portable Changeable Message Sign (TXDOT Spec)	Day	21



**VOID GROUTING DETAIL**  
NOT TO SCALE

- NOTES:**
1. ALL SANITARY SEWER LINES DEPICTED WERE DRAWN PER SEWER BLOCK MAPS 150564 AND 152564.
  2. CONTRACTOR MUST FIELD VERIFY ALL DEPTHS, DISTANCES, PIPE SIZES AND GRADES BEFORE START OF CONSTRUCTION. (N.S.P.I.)
  3. SECTIONS OF PIPE MAY NEED TO BE GROUTED FROM THE TOP FOLLOWING PIPEBURSTING. DURING PRE CCTV INSPECTION, CONTRACTOR TO VERIFY SIGNIFICANT VOIDS TO BE GROUTED. FILLING OF VOID AND ALL SUBSIDIARY WORK SHALL BE PAID AS FLOWABLE FILL. ALL VOID GROUTING SHALL BE DONE IN THE PRESENCE OF A SAWS INSPECTOR. SEE VOID GROUTING DETAIL (THIS SHEET).
  4. SEE TREE PROTECTION AND PRESERVATION GENERAL NOTES ON SHEET 5.
  5. CONTRACTOR TO AVOID SETTING PIPEBURSTING PITS WITHIN DRIVEWAYS AND STREET INTERSECTIONS.
  6. CONTRACTOR SHALL COMPLETE ALL WORK DURING NIGHT HOURS AS APPROVED BY TXDOT AND SAWS.

- CONTRACTOR MUST NOTIFY AND/OR CONTACT SAWS INSPECTIONS AT (210) 233-3500 AND ENGINEER OF RECORD (MAESTAS) AT (210) 366-1988 48 HOURS BEFORE ANY CONSTRUCTION TAKES PLACE. INCLUDING BUT NOT LIMITED TO:
1. NOTIFICATION OF PRE-TELEVISION INSPECTION.
  2. NOTIFICATION OF BYPASS PUMPING SETUP OPERATIONS.
  3. NOTIFICATION OF THE PIPE INSTALLATION.
  4. TESTING.

**CPS NOTE:**  
CONTRACTOR SHALL CONTACT & COORDINATE WITH CPS ENERGY REPRESENTATIVE FOR POLES TO BE BRACED & LINES TO BE RE-ENERGIZED AND/OR MOVED. CONTRACTOR RESPONSIBLE TO CPS ENERGY FOR ANY COSTS ASSOCIATED WITH BRACING OF POWER POLES OR DE-ENERGIZING AND/OR MOVING ANY CONFLICTING OVERHEAD POWER LINES. (N.S.P.I.)

**LEGEND**

PROP. SAN SEWER RECONSTRUCTION OR REHAB LINES	8"
EXIST. LATERAL	8"
EXIST. WATER MAIN	6" C.I.W.
GAS MAIN	2" G
EXIST. SANITARY SEWER	8"
EXIST STORM SEWER	8"
UTILITY POLE LINE	UT
UG TELE CABLE	UT
OH ELECTRIC/TELE	OHE
WATER METER	M
EXIST RIGHT OF WAY	---
PROPERTY LINES	---
EXIST TOPO	---
EASEMENT LINES	---
CHAIN LINK FENCE	---
WROUGHT IRON FENCE	---
WOOD FENCE	---
CONCRETE ENCASMENT	---
PAVEMENT PATCH	---
PROP. SIDEWALK	---
POINT REPAIR/OBSTRUCTION REMOVAL	---

**100% SUBMITTAL NOTES**

1. DUE TO FEDERAL REGULATION TITLE 48, PART 92.181 CPS MUST MAINTAIN ACCESS TO GAS VALVES AT ALL TIMES. THE CONTRACTOR MUST PROTECT AND WORK AROUND ANY GAS VALVES THAT ARE IN THE PROJECT AREA.

**MAESTAS**  
8122 DATAPoint DR., STE. 840 SAN ANTONIO, TX 78229  
(210) 366-1988 TBPE No.: F-333 TBPLS No.: 10194506

No.	Revision	Drawn	Approved	Date

**REVISIONS**

2019 CMOM PACKAGE 2 (URGENT)  
**NOGALITOS ST. SAN. SEWER LAYOUT SHEET 1 OF 2**

DEVELOPER: SAN ANTONIO WATER SYSTEM  
CONT. BUDGET PROJ. # 19-4533

SUBMITTED \_\_\_\_\_  
APPROVED \_\_\_\_\_

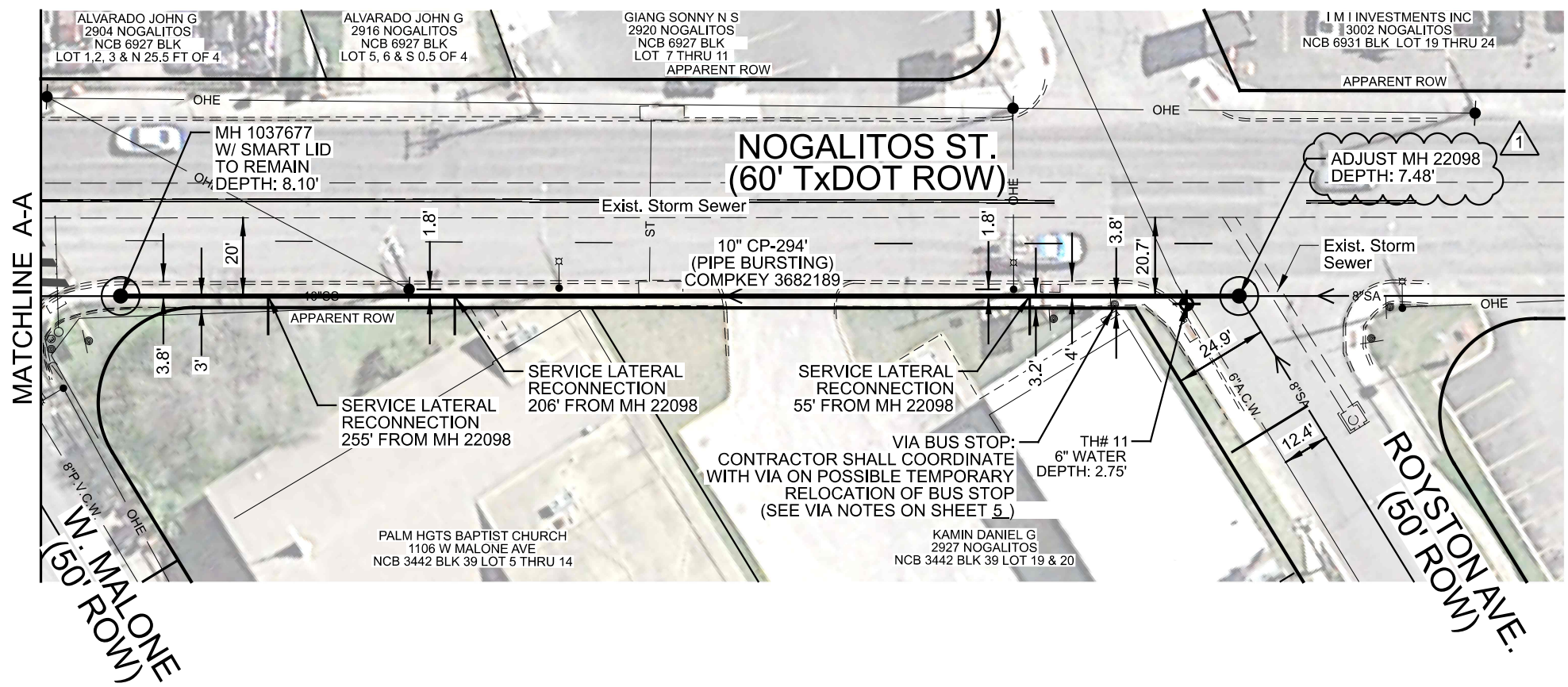
MAP No.	150564	SHEET	14
SECT. No.		DR. CAD	CK. ETM
DR. CAD	CK. ETM	JOB No.	19-4533
			OF 39



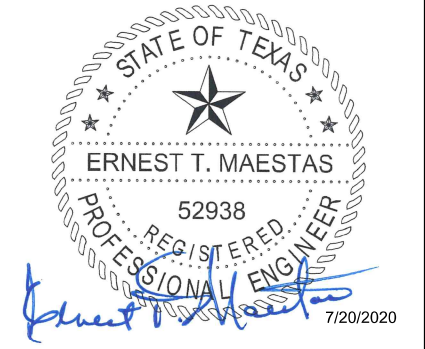
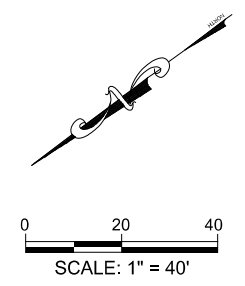
Z:\Projects\1067-03\_SAWS IDIQ\_W09-2019\_CMOM Package 2.06 - CADD Files\06.70 - Utilities\1067-03-SEW-PLAN-NOGALITOS-02.dgn

11:49:10 PM

7/20/2020



ESTIMATED QUANTITIES			
ITEM	DESCRIPTION	UNIT	EST
413.1	Flowable Fill (COSA Spec)	CY	2
851	Adjusting Existing Manholes (with new ring & cover)	EA	1
866	Pre Sewer Main TV Inspection (6" - 15" Dia)	LF	294
900	Pipe Bursting 10" Sanitary Sewer Pipe, 0'-10' depth (DR 13.5 160 PSI)	LF	294
1109	Service Reconnection, (w/ open cut excavation, 0'-10' depth, including up to 10 LF	EA	3
6001	Portable Changeable Message Sign (TXDOT Spec)	Day	14



100% SUBMITTAL

**NOTES**

1. DUE TO FEDERAL REGULATION TITLE 49, PART 92.181 CPS MUST MAINTAIN ACCESS TO GAS VALVES AT ALL TIMES. THE CONTRACTOR MUST PROTECT AND WORK AROUND ANY GAS VALVES THAT ARE IN THE PROJECT AREA.

**LEGEND**

PROP. SAN SEWER RECONSTRUCTION OR REHAB LINES	8"
EXIST. LATERAL	
EXIST. WATER MAIN	6" C.I.W.
GAS MAIN	2" G
EXIST. SANITARY SEWER	8"
EXIST STORM SEWER	
UTILITY POLE LINE	
UG TELE CABLE	UT
OH ELECTRIC/TELE	OHE
WATER METER	M
EXIST RIGHT OF WAY	
PROPERTY LINES	
EXIST TOPO	
EASEMENT LINES	
CHAIN LINK FENCE	
WROUGHT IRON FENCE	
WOOD FENCE	
CONCRETE ENCASMENT	
PAVEMENT PATCH	
PROP. SIDEWALK	
POINT REPAIR/OBSTRUCTION REMOVAL	

**MAESTAS**  
8122 DATAPoint DR., STE. 840 SAN ANTONIO, TX 78229  
(210) 366-1988 TBPE No.: F-333 TBPLS No.: 10194506

No.	Revision	Drawn	Approved	Date
1	Updated Quantities & Notes	CAD	ETM	7/20/2020

**REVISIONS**

2019 CMOM PACKAGE 2 (URGENT)  
**NOGALITOS ST. SAN. SEWER LAYOUT SHEET 2 OF 2**

DEVELOPER: SAN ANTONIO WATER SYSTEM  
CONT. BUDGET PROJ. # 19-4533

SUBMITTED \_\_\_\_\_  
APPROVED \_\_\_\_\_

MAP No.	150564	SHEET	15
SECT. No.		DR. CAD	CK. ETM
DR. CAD	CK. ETM	JOB No.	19-4533
			OF 39

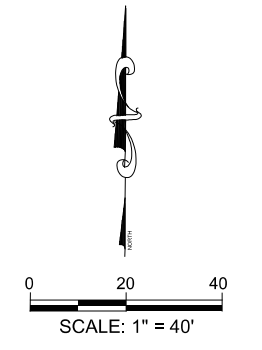
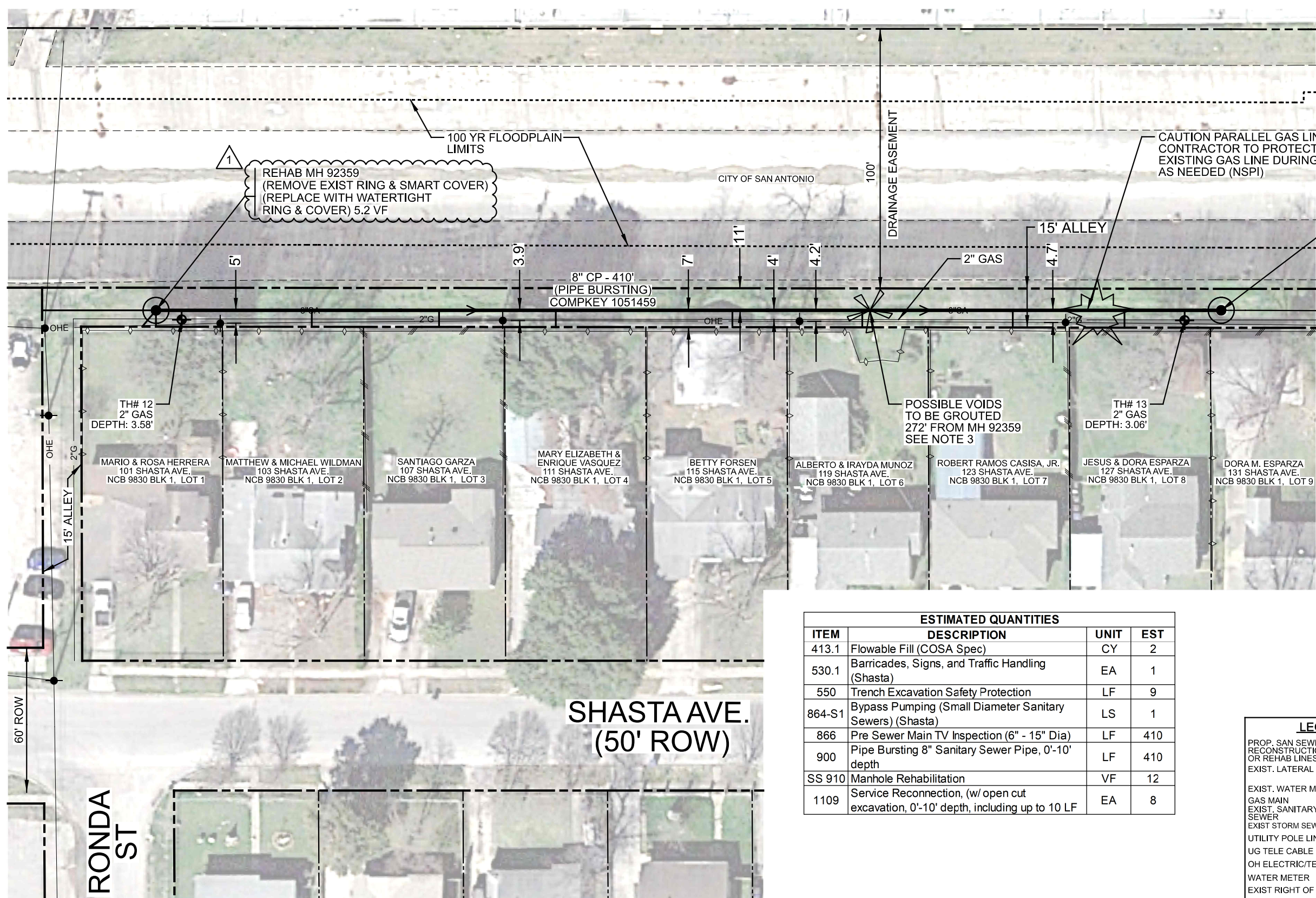
- CONTRACTOR MUST NOTIFY AND/OR CONTACT SAWS INSPECTIONS AT (210) 233-3500 AND ENGINEER OF RECORD (MAESTAS) AT (210) 366-1988 48 HOURS BEFORE ANY CONSTRUCTION TAKES PLACE. INCLUDING BUT NOT LIMITED TO:
1. NOTIFICATION OF PRE-TELEVISION INSPECTION.
  2. NOTIFICATION OF BYPASS PUMPING SETUP OPERATIONS.
  3. NOTIFICATION OF THE PIPE INSTALLATION.
  4. TESTING.

- NOTES:**
1. ALL SANITARY SEWER LINES DEPICTED WERE DRAWN PER SEWER BLOCK MAP 150564.
  2. CONTRACTOR MUST FIELD VERIFY ALL DEPTHS, DISTANCES, PIPE SIZES AND GRADES BEFORE START OF CONSTRUCTION. (N.S.P.I.)
  3. SEE TREE PROTECTION AND PRESERVATION GENERAL NOTES ON SHEET 5.
  4. CONTRACTOR TO AVOID SETTING PIPEBURSTING PITS WITHIN DRIVEWAYS AND STREET INTERSECTIONS.
  5. CONTRACTOR SHALL COMPLETE ALL WORK DURING NIGHT HOURS AS APPROVED BY TxDOT AND SAWS.

**CPS NOTE:**  
CONTRACTOR SHALL CONTACT & COORDINATE WITH CPS ENERGY REPRESENTATIVE FOR POLES TO BE BRACED & LINES TO BE RE-ENERGIZED AND/OR MOVED. CONTRACTOR RESPONSIBLE TO CPS ENERGY FOR ANY COSTS ASSOCIATED WITH BRACING OF POWER POLES OR DE-ENERGIZING AND/OR MOVING ANY CONFLICTING OVERHEAD POWER LINES. (N.S.P.I.)



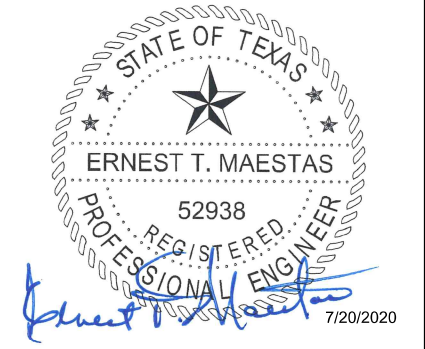
Z:\Projects\1067-03\_SAVS IDIQ WC9-2019 CMOM Package 2.06 - CADD Files\06.70 - Utilities\1067-03-SEW-PLAN-SHASTA-01.dgn 4:46:12 PM 7/20/2020



REHAB MH 92013  
(REMOVE EXIST RING & COVER)  
(REPLACE WITH WATERTIGHT  
RING & COVER) 5.7 VF

REHAB MH 92359  
(REMOVE EXIST RING & SMART COVER)  
(REPLACE WITH WATERTIGHT  
RING & COVER) 5.2 VF

ESTIMATED QUANTITIES			
ITEM	DESCRIPTION	UNIT	EST
413.1	Flowable Fill (COSA Spec)	CY	2
530.1	Barricades, Signs, and Traffic Handling (Shasta)	EA	1
550	Trench Excavation Safety Protection	LF	9
864-S1	Bypass Pumping (Small Diameter Sanitary Sewers) (Shasta)	LS	1
866	Pre Sewer Main TV Inspection (6" - 15" Dia)	LF	410
900	Pipe Bursting 8" Sanitary Sewer Pipe, 0'-10' depth	LF	410
SS 910	Manhole Rehabilitation	VF	12
1109	Service Reconnection, (w/ open cut excavation, 0'-10' depth, including up to 10 LF	EA	8



100% SUBMITTAL

**NOTES**  
1. DUE TO FEDERAL REGULATION TITLE 49, PART 92.181 CPS MUST MAINTAIN ACCESS TO GAS VALVES AT ALL TIMES. THE CONTRACTOR MUST PROTECT AND WORK AROUND ANY GAS VALVES THAT ARE IN THE PROJECT AREA.

**LEGEND**

PROP. SAN SEWER RECONSTRUCTION OR REHAB LINES	8"	
EXIST. LATERAL		
EXIST. WATER MAIN	6" C.I.W.	
GAS MAIN	2" G	
EXIST. SANITARY SEWER	8"	
EXIST. STORM SEWER		
UTILITY POLE LINE		
UG TELE CABLE	UT	
OH ELECTRIC/TELE	OHE	
WATER METER		
EXIST RIGHT OF WAY		
PROPERTY LINES		
EXIST TOPO		
EASEMENT LINES		
CHAIN LINK FENCE		
WROUGHT IRON FENCE		
WOOD FENCE		
CONCRETE ENCASMENT		
PAVEMENT PATCH		
PROP. SIDEWALK		
POINT REPAIR/OBSTRUCTION REMOVAL		

**MAESTAS**  
8122 DATAPoint DR., STE. 840 SAN ANTONIO, TX 78229  
(210) 366-1988 TBPE No.: F-333 TBPLS No.: 10194506

No.	Revision	Drawn	Approved	Date
	Updated Callouts	CAD	ETM	7/20/2020

**REVISIONS**  
2019 CMOM PACKAGE 2 (URGENT)  
**SHASTA AVE. SAN. SEWER LAYOUT SHEET 1 OF 1**

DEVELOPER:	SAN ANTONIO WATER SYSTEM		
CONT.	BUDGET PROJ. # 19-4533		
SUBMITTED			
APPROVED			
MAP No.	158552	SHEET	16
SECT. No.		DR. CAD	CK. ETM
JOB No.	19-4533	OF	39

CONTRACTOR MUST NOTIFY AND/OR CONTACT SAWS INSPECTIONS AT (210) 233-3500 AND ENGINEER OF RECORD (MAESTAS) AT (210) 366-1988 48 HOURS BEFORE ANY CONSTRUCTION TAKES PLACE. INCLUDING BUT NOT LIMITED TO:

- NOTIFICATION OF PRE-TELEVISION INSPECTION.
- NOTIFICATION OF BYPASS PUMPING SETUP OPERATIONS.
- NOTIFICATION OF THE PIPE INSTALLATION.
- TESTING.

**NOTES:**

- ALL SANITARY SEWER LINES DEPICTED WERE DRAWN PER SEWER BLOCK MAP 158552.
- CONTRACTOR MUST FIELD VERIFY ALL DEPTHS, DISTANCES, PIPE SIZES AND GRADES BEFORE START OF CONSTRUCTION. (N.S.P.I.)
- SECTIONS OF PIPE MAY NEED TO BE GROUTED FROM THE TOP FOLLOWING PIPEBURSTING. DURING PRE CCTV INSPECTION, CONTRACTOR TO VERIFY SIGNIFICANT VOIDS TO BE GROUTED. FILLING OF VOID SHALL BE PAID AS FLOWABLE FILL. ALL VOID GROUTING SHALL BE DONE IN THE PRESENCE OF A SAWS INSPECTOR. SEE VOID GROUTING DETAIL ON SHEET 14.

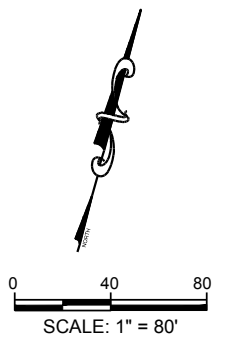
CONTRACTOR TO COORDINATE WITH PROPERTY OWNERS TO MINIMIZE SEWER FACILITY USAGE DURING CONSTRUCTION AND/OR INTERCEPT SEWER LATERALS AS NEEDED.

**SHASTA AVE.  
(50' ROW)**

**RONDA ST**



**CAUTION!!!**  
 EXISTING UNDERGROUND AND  
 OVERHEAD UTILITIES IN THE  
 AREA. 48 HOURS PRIOR TO  
 CONSTRUCTION CONTACT  
 1-800-DIG-TESS



**NOTES:**  
 THE BYPASS PLAN SHOWN HAS BEEN SURVEYED OR FIELD  
 VERIFIED. THE CONTRACTOR IS TO VERIFY THE SEWER  
 SYSTEM AND SUBMIT A BYPASS PLAN FOR APPROVAL BY  
 ENGINEER AND SAWS.

THE CONTRACTOR WILL BE REQUIRED TO COORDINATE  
 THE APPROPRIATE PERMITS AND REQUIREMENTS DUE  
 TO THE FLOODPLAIN.

CONTRACTOR SHALL SUBMIT AN ANCHORAGE PLAN IN  
 ACCORDANCE WITH SAWS STD SPECIFICATION 864-S1 FOR  
 ALL BYPASS PIPING WITHIN THE FLOOD PLAIN.

CONTRACTOR SHALL NOT PERFORM WORK DURING  
 RAIN EVENTS. THE BYPASS SYSTEM SHALL NOT  
 OBSTRUCT STORM RUNOFF FROM ENTERING THE  
 SIDEWALK BRIDGE TO THE FLUME OR OBSTRUCT FLOW  
 WITHIN THE DRAINAGE FLUME.



FREESSE AND NICHOLS, INC. TEXAS  
 REGISTERED ENGINEERING FIRM F-2144



**NOTES**

DUE TO FEDERAL REGULATION TITLE 49, PART 92.181 CPS MUST  
 MAINTAIN ACCESS TO GAS VALVES AT ALL TIMES. THE  
 CONTRACTOR MUST PROTECT AND WORK AROUND ANY GAS  
 VALVES THAT ARE IN THE PROJECT AREA.



9601 McAllister Freeway, Suite 1008  
 San Antonio, Texas 78216  
 Phone - (210) 298-3800  
 Web - www.freese.com

**MAESTAS**

8122 DATAPoint DR., STE. 840 SAN ANTONIO, TX 78229  
 (210) 366-1988 TBPE No.: F-333 TBPLS No.: 10194506

No.	Revision	Drawn	Approved	Date
ADDENDUM 1			REV	7/17/2020

**2019 CMOM PACKAGE 2 (URGENT)**  
**BRETTON RIDGE**  
**SUGGESTED BYPASS PLAN**

DEVELOPER: SAN ANTONIO WATER SYSTEM  
 CONT. BUDGET PROJ. # 19-4533

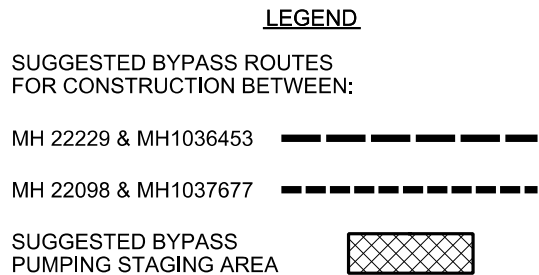
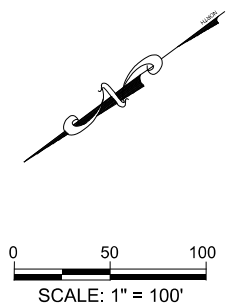
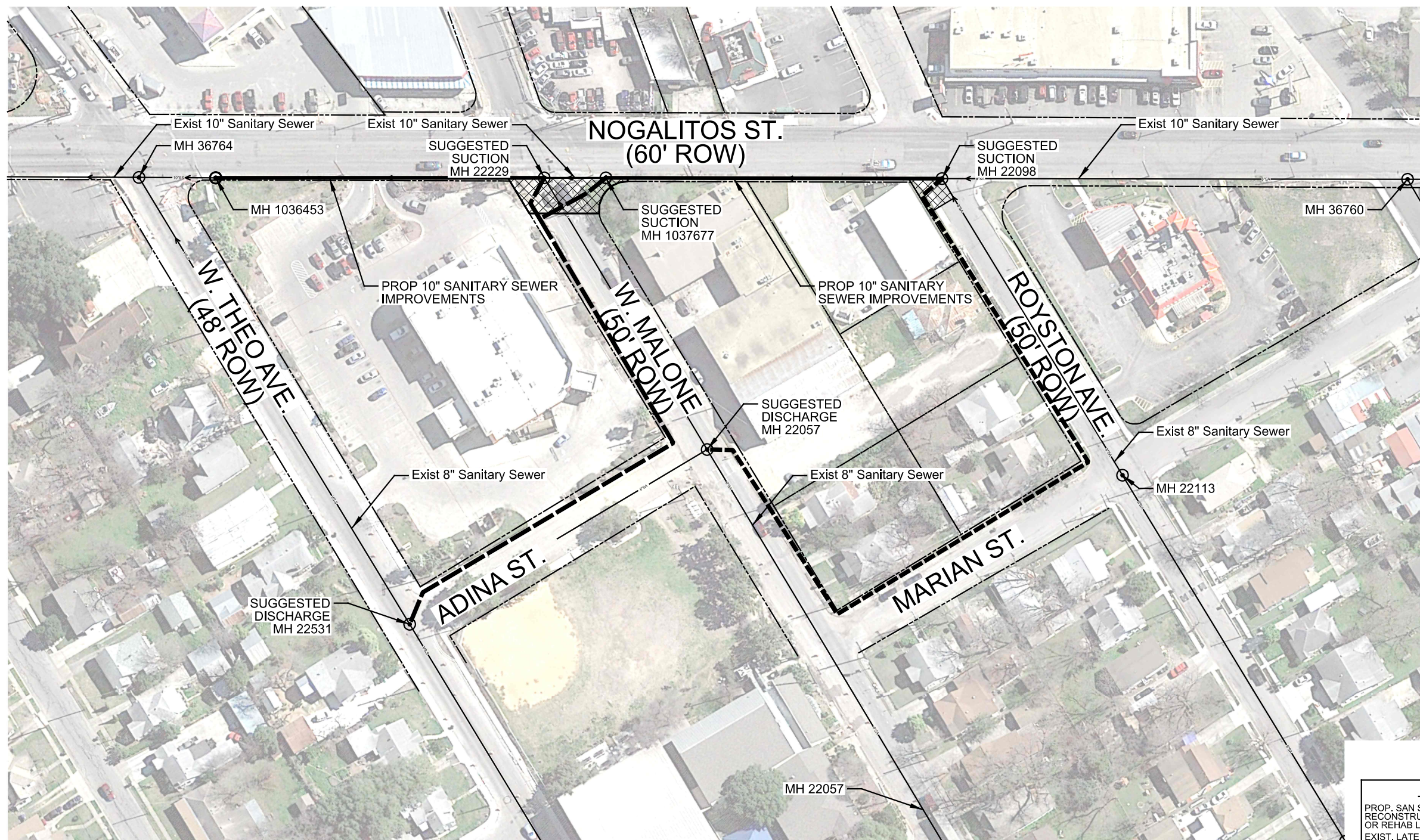
SUBMITTED \_\_\_\_\_  
 APPROVED \_\_\_\_\_

MAP No.	SAWS MAP# 184612	SHEET 20 OF 39
SECT. No.		
DR. EL	CK. DTB	JOB No. 19-4533

ACAD Ref: 23.04 (IMS Tech)  
 Filename: N:\WTU\Drawings\20200325.WTU-SAWS-PB01.dwg  
 Last Saved: 6/26/2020 1:54 PM. Saved By: 03576



Z:\Projects\1067-03\_SAVS IDIQ W09-2019 CMOM Package 2.06 - CADD Files\06.70 - Utilities\1067-03-BYPASS-NOGALITOS-01.dgn 4:35:16 PM 7/20/2020



**NOTES:**  
 1. CONTRACTOR SHALL NOT BURY BYPASS PIPING UNDER DRIVEWAYS ON NOGALITOS ST.

**LEGEND**

PROP. SAN SEWER RECONSTRUCTION OR REHAB LINES	
EXIST. LATERAL	
EXIST. WATER MAIN	
GAS MAIN	
EXIST. SANITARY SEWER	
EXIST. STORM SEWER	
UTILITY POLE LINE	
UG TELE CABLE	
OH ELECTRIC/TELE	
WATER METER	
EXIST RIGHT OF WAY	
PROPERTY LINES	
EXIST TOPO	
EASEMENT LINES	
CHAIN LINK FENCE	
WROUGHT IRON FENCE	
WOOD FENCE	
CONCRETE ENCASEMENT	
PAVEMENT PATCH	
PROP. SIDEWALK	
POINT REPAIR/OBSTRUCTION REMOVAL	

STATE OF TEXAS  
 ERNEST T. MAESTAS  
 52938  
 REGISTERED PROFESSIONAL ENGINEER  
  
 7/20/2020  
 100% SUBMITTAL

**MAESTAS**  
 8122 DATAPoint DR., STE. 840 SAN ANTONIO, TX 78229  
 (210) 366-1988 TBPE No.: F-333 TBPLS No.: 10194506

No.	Revision	Drawn	Approved	Date
	Bypass Note Added	CAD	ETM	7/20/2020

**REVISIONS**

2019 CMOM PACKAGE 2 (URGENT)  
 NOGALITOS ST.  
 SUGGESTED BYPASS PLAN  
 SHEET 1 OF 1

DEVELOPER: SAN ANTONIO WATER SYSTEM  
 CONT. BUDGET PROJ. # 19-4533

SUBMITTED \_\_\_\_\_  
 APPROVED \_\_\_\_\_

MAP No.	SHEET
SECT. No.	21
DR. CAD	CK. ETM
JOB No. 19-4533	OF 39